

NeighborNotes

July 2006

A Publication of The Doe Run Company

HERCULANEUM FACILITY ACHIEVES NATIONAL AMBIENT AIR QUALITY STANDARD

The Doe Run Company's Herculaneum facility met the National Ambient Air Quality Standard (NAAQS) for lead in the second quarter of 2006.

"In addition to meeting the NAAQS, we continue to be in compliance with the State Implementation Plan (SIP)," said Gary Hughes, general manager of the company's Herculaneum operation.

According to data collected by Doe Run, final second quarter 2006 results from the 10 air monitors in Herculaneum ranged from 0.2 to 1.5 micrograms of lead per cubic meter of air, placing the smelter within the Environmental Protection Agency (EPA)-specified air quality standard of 1.5 micrograms of lead per cubic meter of air (averaged over a calendar quarter).

"We believe recent efforts, such as additional ventilation and technology upgrades made earlier this year, are having a positive impact," said Hughes. "While we have consistently met the standard at nine of 10 air monitoring stations, a single monitor located within 200 yards of the facility has been either slightly over or under the standard. We're pleased to have met the standard this quarter, and we're committed to working with the EPA and the Missouri Department of Natural Resources (MDNR) to identify further

measures that will allow us to consistently meet the standard."

In addition to technology and ventilation, the company is also exploring the value of creating a greater buffer zone between the smelter and community. Modeling and testing demonstrates that levels of emissions decline significantly with distance.

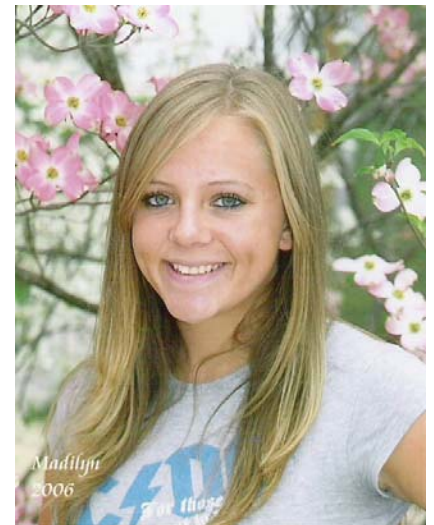
WHAT IS A SIP?

A SIP, or State Implementation Plan, is a plan prepared by the state identifying measures to reach a specific objective. The SIP currently under review by the Missouri Department of Natural Resources (MDNR) outlines steps and controls (including new measures) designed to enable the area around the Herculaneum smelter to meet the National Ambient Air Quality Standard (NAAQS) for lead. The standard for lead is 1.5 micrograms of lead per cubic meter of air, averaged over a calendar quarter.

While the Herculaneum facility has always been in compliance with the SIP (meaning the smelter complied with the guidelines and measures outlined in the SIP) a single air monitoring station located nearest the smelter has in recent years registered slightly *under* or *over* the standard. When the monitor averages more than 1.5 for a calendar quarter, the area – by definition – is termed "out of attainment" with the NAAQS.

The MDNR is currently reviewing proposed control measures to prepare for a *revised SIP* designed to enable the area to consistently achieve the NAAQS

for lead. The MDNR will submit its recommendations to the EPA in April 2007. Although Doe Run's Herculaneum facility will have until April 2008 to implement the new controls approved in the new SIP, the company is already working to put into place many of the new recommendations.



Madelyn Lowrey of Grandview, Mo., is the recipient of a \$600 scholarship at Jefferson College in Hillsboro, Mo.

JEFFERSON COLLEGE FRESHMAN RECEIVES DOE RUN SCHOLARSHIP

The Doe Run Company's Herculaneum Smelting Division has awarded Madelyn Lowrey of Grandview, Mo., a \$600 renewable scholarship toward her education at Jefferson College in Hillsboro, Mo.

"One of our commitments is to support the future leaders of our community in their educational endeavors," said Rick Batts,

human resources manager at Doe Run. "Supporting a student's educational endeavors is a concrete way that we can recognize his or her accomplishments and potential. In Madelyn's case, we learned about her dedication to education and her commitment to the community, both of which made her an ideal choice for the 2006-07 Jefferson College scholarship."

Lowrey will enter Jefferson College this fall and plans to major in secondary education. Afterwards, she'd like to teach locally.

"I am honored to be one of the students chosen," she said. "I would like to thank Doe Run for helping me further my education. I hope to teach in Jefferson County, and I feel lucky because I know a career in education is my calling. It's going to be challenging, but definitely fulfilling."

During high school, Lowrey held leadership positions with the cheerleading squad and several Grandview High School clubs and organizations. She credits her parents with inspiring her to overcome challenges and be the best she can be. "I know that without them I wouldn't have gotten as far as I have," she said.

Doe Run offers a variety of local scholarships throughout Missouri, donating more than \$10,000 per year in support of education. Doe Run's Herculaneum Smelting Division is also a long-time partner in the Dunklin R-5 Renaissance Program (acknowledging the educational achievements and outstanding contributions of students and staff members) and a three-time recipient of the district's Business Partner of the Year designation. The company also hosts a summer student employment program for

college or college-bound students 18 years or older.

SMELTER HOSTS TOUR FOR GLOBAL COMPANY

The Doe Run Company's Herculaneum Smelting Division recently hosted a refinery tour for long-time customer Schlumberger. Founded in 1927, Schlumberger is a leading oilfield services provider with principal offices in New York, Paris and the Hague, Netherlands.

On the tour, visitors learned about the alloy casting process and explored facility improvements and shipping methods.

"We enjoyed seeing how Doe Run produces the products that we use in our own processes and we found the new casting arm extremely interesting," said Debby Roberts, Schlumberger tour participant and purchasing coordinator. "We're in the process

of reevaluating our current shipping method and appreciate the time that Doe Run took to explain our options. It's easy to see why industry has historically thrived in this location, as Herculaneum is so accessible by river, rail and roadways."

"Schlumberger has been a strong and steady customer since Doe Run purchased the Missouri lead operations of ASARCO in 1998," added Steve Stack, Doe Run manager of North American Sales. "We were pleased to educate Schlumberger about our operations and host them in historic Herculaneum."

The Doe Run Company provides Schlumberger with copper-infused lead, used to produce lead-coated cables necessary in the oil industry. Schlumberger's global operations employ more than 64,000 people in 80 countries.



MINERALS MATCH

Can you match the product on the left with the mineral needed to make it on the right?

Paint

Baby Powder

Kaopectate

Toothpaste

Computer Chips

Pencils

Automotive Battery

Plant Food

Soda Cans

Salt

Halite

Graphite

Phosphate

Galena

Talc

Kaolin

Bauxite Ore

Mica

Fluorite

Quartz

Watch for answers in next newsletter!